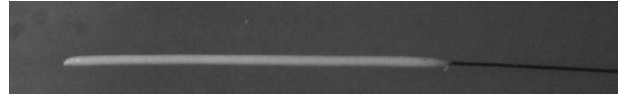


DOCCOL CORPORATION

Serving Stroke Research Since 2004

Doccol provides MCAO sutures (silicon rubber-coated monofilaments) with both a great variety and the best quality, which meet the diverse needs from stroke investigators. Our monofilaments have been well recognized and preferably selected by stroke investigators for inducing ischemic stroke models. Our clients are top-ranked universities, highly prestigious research institutes, and world-leading pharmaceutical companies from all over the United States, Canada, most European countries, Australia, Japan, South Korea, and India.

Using [Doccol monofilaments](#) for inducing MCAO models has been reported to be able to drastically decrease the within-group variation of stroke models, reducing the **standard deviation**



(SD) to **5%** of the mean value for infarction volume. Such an improvement in stroke model consistency is an important contribution in the stroke research field, especially for preclinical studies that aim to evaluate neuroprotective effects for acute ischemic stroke treatments. Using Doccol monofilaments for inducing MCAO models has been widely accepted as a necessary technical step and also a new standard for ensuring the highest quality of stroke modeling. For more information please read [Doccol Made a Difference in Stroke Modeling](#).

The fluctuation of the surgical area temperature is one of the major factors that cause infarct volume variation in small animal stroke modeling. Maintenance of the surgical area temperature within an acceptable range is one of the important steps for achieving an excellent consistency of in vivo stroke modeling, which can never be neglected. [Doccol PID temperature controller](#) is specially designed for maintaining the surgical area temperature for small animal surgery, and is able to provide a very stable surface temperature of a heating pad, to a narrow range of +/- 0.1 °C. In addition to all these advanced functions, we offer a very competitive price.



References:

- J Neurosci.* 2008 Apr; 28(18):4661-70.
Stroke. 2008 Mar; 39(3):943-50.
Stroke. 2007 Mar; 38(3):1057-62.
Stroke. 2007 May; 38(5):1606-13.
Stroke. 2006 Jul; 37(7):1888-94.
Stroke. 2006 Jul; 37(7):1902-9.
J Cereb Blood Flow Metab. 2008 Jun; 28(6):1104-13.
J Cereb Blood Flow Metab. 2007 May; 27(5):919-27
J Cereb Blood Flow Metab. 2007 Jan; 27(1):1-5
J Cereb Blood Flow Metab. 2006 Oct; 26(10):1274-84.
J Neurosci Methods. 2008 Sep; 174(1): 18-24
J Neurosci Methods. 2006 Sep; 156(1-2):161-5.
- Brain.* 2007 Jan; 130(Pt 1):151-8.
Neuroscience. 2006 Dec; 143(4):965-74.
J Neurosci Res. 2006 Sep; 84(4):832-40.
BMC Neurosci. 2008 Feb; 9:19.
J Biol Chem. 2007 Feb 16; 282(7):4634-42.
J Exp Med. 2008 Jul; 205(7):1583-91.
J Exp Med. 2006 Mar; 203(3):513-8.
Circulation. 2007 May; 115(17):2323-30.
J Clin Invest. 2007 Jul; 117(7):1961-7.
Restor Neurol Neurosci. 2007;25(2):151-9.
Nitric Oxide. 2006 Sep; 15(2):114-24.

Doccol PID temperature control system

Item #	Product Name+	Price
E12107	AC heating pad	\$29.80
WS1500B	Doccol PID temperature controller	\$498.00

Silicon rubber-coated monofilaments for MCAO models

Item #	Product Name+	Price
30SP	30 MyDesign MCAO suture (options to select)	\$5.98
30SPPK10	30 MyDesign MCAO suture PK10 (options to select)	\$58.80
403556	40 fine MCAO suture L56	\$5.98
403556PK10	40 fine MCAO suture L56 PK10	\$58.80
4035PK10	40 fine MCAO suture PK10	\$59.80
4035PK5Re	40 fine MCAO suture reusable PK5	\$58.50
404156	40 large MCAO suture L56	\$5.98
404156PK10	40 large MCAO suture L56 PK10	\$58.80
4041PK10	40 large MCAO suture PK10	\$58.80
4041PK5Re	40 large MCAO suture reusable PK5	\$58.50
404356	40 Max MCAO suture L56	\$6.48
404356PK10	40 Max MCAO suture L56 PK10	\$63.80
4043PK10	40 Max MCAO suture PK10	\$63.80
4043PK5Re	40 Max MCAO suture reusable PK5	\$63.50
40-3033PK10	40 MCAO suture PK10	\$59.80
403956	40 Medium B MCAO suture L56	\$5.98
403956PK10	40 Medium B MCAO suture L56 PK10	\$58.80
4039PK10	40 Medium B MCAO suture PK10	\$58.80
4039PK5Re	40 Medium B MCAO suture reusable PK5	\$58.50
403756	40 medium MCAO suture L56	\$5.98
403756L50	40 medium MCAO suture L56 superlong	\$8.98
403756PK10	40 medium MCAO suture L56 PK10	\$58.80
4037PK10	40 medium MCAO suture PK10	\$58.80
4037PK5Re	40 medium MCAO suture reusable PK5	\$58.50
40SP	40 MyDesign MCAO suture (options to select)	\$5.98
40SPPK10	40 MyDesign MCAO suture PK10 (options to select)	\$58.50
40SPRe	40 MyDesign MCAO suture Re (options to select)	\$11.70
40SPRePK5	40 MyDesign MCAO suture Re PK5 (options to select)	\$58.50
502956	50 fine MCAO suture L56	\$6.98
502956PK10	50 fine MCAO suture L56 PK10	\$68.80
5029PK10	50 fine MCAO suture PK10	\$68.80
5033PK10	50 large MCAO suture 33 PK10	\$68.80
503345	50 large MCAO suture 3345	\$6.98
503345PK10	50 large MCAO suture 3345 PK10	\$68.80
503356	50 large MCAO suture 3356	\$6.98
503356PK10	50 large MCAO suture 3356 PK10	\$68.80
50-3033PK10	50 MCAO suture PK10	\$69.80
50-3033PK5Re	50 MCAO suture reusable PK5	\$58.50
5031PK10	50 medium MCAO suture 31 PK10	\$68.80
503156	50 medium MCAO suture 3156	\$6.98
503156PK10	50 medium MCAO suture 3156 PK10	\$68.80
50SP	50 MyDesign MCAO suture (options to select)	\$6.98
50SPPK10	50 MyDesign MCAO suture PK10 (options to select)	\$69.80
50SPRe	50 MyDesign MCAO suture Re (options to select)	\$11.70

50SPRePK5	50 MyDesign MCAO suture Re PK5 (options to select)	\$58.50
502756	50 Superfine MCAO suture L56	\$6.98
502756PK10	50 Superfine MCAO suture L56 PK10	\$68.80
5027PK10	50 Superfine MCAO suture PK10	\$68.80
602156	60 fine MCAO suture L56	\$7.99
602156PK10	60 fine MCAO suture L56 PK10	\$78.90
6021PK10	60 fine MCAO suture PK10	\$78.90
6021PK5Re	60 fine MCAO suture Re PK5	\$74.90
602556	60 large MCAO suture L56	\$7.99
602556PK10	60 large MCAO suture L56 PK10	\$79.90
6025PK10	60 large MCAO suture PK10	\$78.90
6025PK5Re	60 large MCAO suture reusable DOC25 PK5	\$76.90
602756PK10	60 Max MCAO suture L56 PK10	\$79.90
6027PK10	60 Max MCAO suture PK10	\$78.90
6027PK5Re	60 Max MCAO suture reusable DOC27 PK5	\$76.90
60-1720PK10	60 MCAO suture PK10	\$79.90
60-1720PK5Re	60 MCAO suture reusable PK5	\$74.90
602356	60 medium MCAO suture L56	\$7.99
602356L50	60 medium MCAO suture L56 superlong	\$10.99
602356PK10	60 medium MCAO suture L56 PK10	\$78.90
6023PK10	60 medium MCAO suture PK10	\$78.90
6023PK5Re	60 medium MCAO suture reusable PK5	\$74.90
60SP	60 MyDesign MCAO suture (options to select)	\$7.99
60SPPK10	60 MyDesign MCAO suture PK10 (options to select)	\$79.90
60SPRe	60 MyDesign MCAO suture Re (options to select)	\$14.98
60SPRePK5	60 MyDesign MCAO suture Re PK5 (options to select)	\$74.90
701956PK5Re	70 fine MCAO suture Re L56 PK5	\$80.90
7019PK5Re	70 fine MCAO suture reusable PK5	\$80.90
702156PK5Re	70 large MCAO suture Re L56 PK5	\$78.95
7021PK5Re	70 large MCAO suture reusable PK5	\$78.95
702309Re	70 Max MCAO suture Re 2309	\$21.58
70CL9TD023Re	70 Max MCAO suture Re 2309	\$21.58
702309PK5Re	70 Max MCAO suture Re 2309 PK5	\$106.90
702356PK5Re	70 Max MCAO suture Re L56 PK5	\$78.95
7023PK5Re	70 Max MCAO suture reusable PK5	\$78.95
70-1720ReL10	70 MCAO suture reusable L10	\$19.00
70-1720PK5Re	70 MCAO suture reusable PK5	\$78.90
702056PK5Re	70 medium MCAO suture Re L56 PK5	\$78.95
7020PK5Re	70 medium MCAO suture reusable PK5	\$78.95
70SPRe	70 MyDesign MCAO suture Re (options to select)	\$16.58
70SPRePK5	70 MyDesign MCAO suture Re PK5 (options to select)	\$81.90
701756PK5Re	70 Superfine MCAO suture Re L56 PK5	\$88.95
7017PK5Re	70 Superfine MCAO suture reusable PK5	\$88.95
